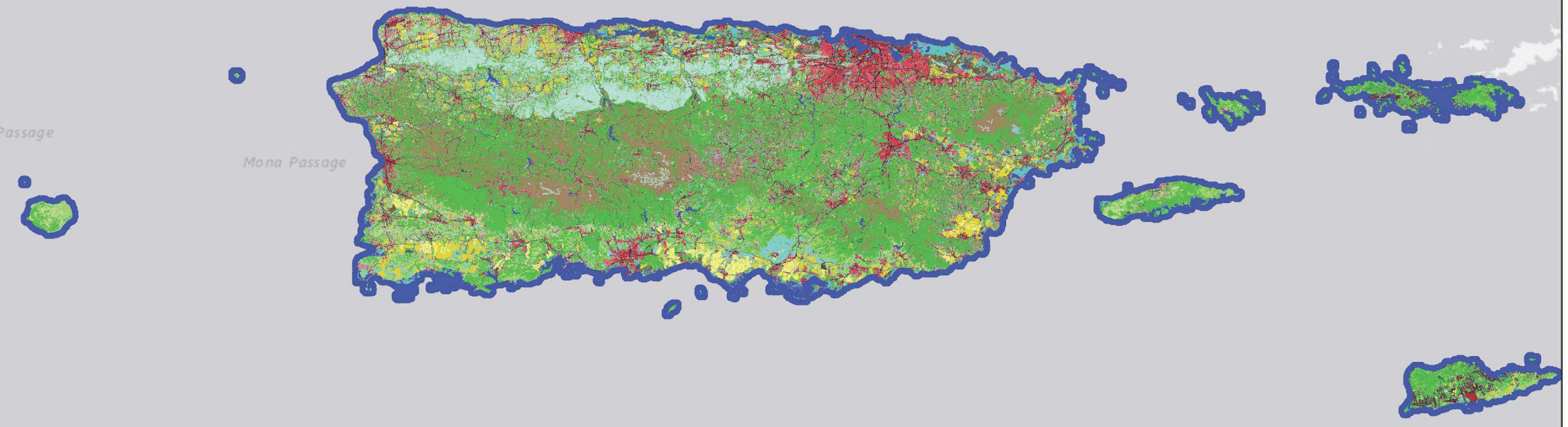




LF 2016 Remap IA Puerto Rico Virgin Islands

Existing Vegetation Type

- Recently Logged-Herb and Grass Cover
- Recently Logged-Shrub Cover
- Open Water
- Quarries/Strip Mines
- Developed-Low Intensity
- Developed-Medium Intensity
- Developed-High Intensity
- Developed-Roads
- Developed-Open Space
- Agriculture-Pasture and Hay
- Agriculture-Cultivated Crops and Irrigated Agriculture
- Caribbean Bush fruit and berries
- Caribbean Coastal Mangrove
- Caribbean Coastal Rocky Shore
- Caribbean Coastal Thornscrub
- Caribbean Dry Karst Shrubland
- Caribbean Edapho-Xerophilous "Mogote" Complex
- Caribbean Emergent Herbaceous Estuary
- Caribbean Estuary Mangrove
- Caribbean Floodplain Forest
- Caribbean Freshwater Marsh
- Caribbean Lowland Moist Serpentine Woodland
- Caribbean Montane Wet Elfin Forest
- Caribbean Montane Wet Serpentine Woodland
- Caribbean Montane Wet Short Shrubland
- Caribbean Riparian Forest
- Caribbean Salt Flat and Pond
- Caribbean Sand Beach Vegetation
- Caribbean Seasonal Evergreen Submontane/Lowland Forest
- Caribbean Semi-deciduous Lowland Forest
- Caribbean Serpentine Dry Scrub
- Caribbean Submontane/Montane Karstic Forest
- Caribbean Wet Montane Forest
- Caribbean Wet Submontane/Lowland Forest
- Stabilized Caribbean Dunes
- Caribbean Floodplain Shrubland
- Caribbean Riparian Shrubland
- Caribbean & Mesoamerican Lowland Ruderal Shrubland
- Caribbean Ruderal Dry Forest
- Caribbean Lowland Ruderal Rainforest
- Caribbean Ruderal Freshwater Wet Meadow & Marsh
- Tropical Agroforestry Plantation
- Caribbean & Mesoamerican Lowland Ruderal Grassland



passage
Mona Passage

